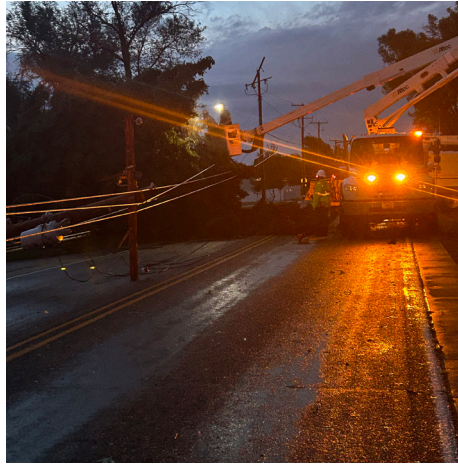




# NorthWestern Energy regulatory rate review



## Reliable energy at reasonable rates

- Montanans expect reliable energy service, and NorthWestern Energy's job is to deliver it safely, 24 hours a day, 365 days a year, while keeping bills as low as possible.
- Our customers count on us to meet today's rapidly growing energy needs. As dangerous storms and wildfires become more frequent, we know Montanans and customers look to us to ensure that a resilient energy grid is ready.
- We work to keep costs as low as possible while meeting our commitment to ensure that lights and heat come on when needed. NorthWestern Energy's Montana electric and natural gas rates remain well below the average national rates. We make significant investments in our Montana system every year to provide reliable energy service for customers now and in the future. NorthWestern Energy is requesting a regulatory rate review so that rates reflect the cost of serving our Montana customers.

## Clean and reliable energy generation

- About 60% of the energy serving our Montana customers is from carbon-free, clean generation, compared with about 40% nationally. We serve our customers with power from proven generation technology that is reliable, meets our customers' energy needs and keeps costs as low as possible.
- NorthWestern Energy's Montana hydro facilities are the backbone of our clean generation. We have not only maintained these century-old facilities but have upgraded them to provide Montanans with more energy today than they did a decade ago.
- More on-demand energy generation available in all weather conditions was needed for reliable energy service in Montana. That is why NorthWestern Energy

started construction of the on-demand 175-megawatt natural gas-fired Yellowstone County Generating Station in 2022. The plant began serving Montana customers last summer.

- The dispatchable generation, located in Montana, provides dependable energy to meet our customers' needs in all weather, day and night. Yellowstone County Generating Station allows us to avoid making higher-priced purchases from the energy market, flow-through costs that customers pay. It also allows us to sell unused energy on the market, which benefits customers.
- Our Montana residential customers' rates decreased more than 5% beginning Dec. 1, 2024, in part because Yellowstone County Generating Station is serving our customers.
- The Yellowstone County Generating Station's units can ramp from off to full generation capacity in 8 minutes and can be operated separately, providing fast, efficient, and flexible generation.
- The Montana grid has a considerable amount of intermittent wind and solar generation, and the Yellowstone County Generating Station's on-demand, flexible generation keeps the grid stable when generation from those resources is strong and when it drops.
- NorthWestern Energy's 222-megawatt share of the Colstrip Plant, located in Montana, provides power generation in all weather conditions at reasonable costs for our Montana customers.
- NorthWestern Energy owns several generation resources to supply power to our Montana customers and among these, the Colstrip Plant generates 35% of the total power.
- The Colstrip Plant's qualifying capacity contribution in the Western Resource Adequacy Program (WRAP) is about 98.9% of the plant's maximum potential output.



## Keeping customers' bills low

- NorthWestern Energy's Montana electric and gas services are delivered at high levels of reliability, at the lowest rates possible.
- The average energy bills for NorthWestern Energy Montana customers are less than the national average for energy bills, despite the significant flow-through costs of Montana property taxes reflected in customers' bills.
- NorthWestern Energy's Montana energy efficiency programs and activities produced enough energy savings for our customers in 2024 to power 6,541 homes and heat 537 homes for a year.
- We leverage our existing infrastructure and equipment by investing in maintenance, part of our commitment to deliver reliable and affordable service for our customers.
- Equipment that is no longer efficient or safe is replaced.
- We are modernizing our electric system in Montana, which involves upgrading our infrastructure, technology and processes. This enhances our service reliability, our system's resiliency, and reduces the risk of outages and disruptions.
- We recognize our customers face other price increases. NorthWestern Energy assists customers who need help with their energy bills, offering payment options, referrals to energy assistance programs, a bill discount, and energy efficiency and weatherization programs.

## Wildfire prevention

- We expect wildfire risk to continue to grow in the coming years and decades. We have a Wildfire Operational department which focuses on monitoring weather forecasts and environmental conditions across our service territory. We're also implementing new field cameras that will allow us to monitor our system and detect wildfires as soon as they start.
- New system technologies provide us with the ability to actively change how the electrical grid operates during high-risk conditions. We're increasing the scope and frequency of ground and aerial assessments of our electrical system so we can repair issues before they

cause fires. We're also using a technology called lidar to evaluate portions of the system and using a risk model to prioritize maintenance work.

- We have proactive efforts in place to mitigate against trees or tree branches falling into power lines, to maintain healthy forests and to decrease fuel loading. This includes doing aerial and ground assessment of our powerlines and removing any vegetation that is at high risk of causing a wildfire.
- NorthWestern Energy's second Wildfire Summit will be held in May to bring together agencies and organizations to work toward common goals, provide insight into the unique perspectives about wildfire and strengthen relationships to protect Montana's communities.

## NorthWestern Energy's economic impact

In 2024, NorthWestern Energy's activities in Montana generated a total economic impact of \$2.59 billion, fueling local businesses, creating jobs, and strengthening communities across the state.

**Boosting Montana's Economy** – NorthWestern Energy's activities added \$1.12 billion to Montana's Gross State Product, helping drive economic growth.

**Creating & Supporting Jobs** – NorthWestern Energy directly and indirectly supports 15,721 jobs in Montana, generating \$532.7 million in wages for workers across various industries.

**Supporting Montana's Tax Base** – NorthWestern Energy's activities support \$195.3 million in state and local property taxes, helping fund schools, roads and essential services that benefit every Montanan.

NorthWestern Energy provides electricity to about **413,400 customers in 224 Montana communities** and their surrounding rural areas and **13 rural electric cooperatives** in Montana.

NorthWestern Energy provides natural gas service to about **214,500 customers in 121 Montana communities**.

NorthWestern Energy employs about **1,277 in Montana**.

**For the latest information on the Montana Rate Review visit [NorthWesternEnergy.com](https://www.northwesternenergy.com)**



**Take a tour of the Yellowstone County  
Generating Station!**

**NorthWestern<sup>®</sup>**  
**Energy**  
*Delivering a Bright Future*